



## MARCHESE + PARTNERS NEWS

### M-Central Award Nominations

marchese + partners are proud to announce that the recently completed m-central has been shortlisted for the RIAA architecture awards in 3 categories; heritage, architecture and interior design. The successful transformation of the historic woolstores into revolutionary apartments demonstrates Marchese Partners expertise in thinking outside the square to maximise the potential of this otherwise underutilised landmark building. The key achievements of the Marchese partners scheme undertaken in association with Dale Jones Evans were,

1. The Development approval for the scheme was achieved in only 7 months.
2. The buildings re-use was maximised by cleverly adding a skin of loft apartments to the external skin of the building whilst maintaining the core of the building as a public car park.
3. The creation of a unique interior design concept for the apartments that featured timber finishes that complemented the existing brick walls and concrete soffits. This dynamic internal ambience unlike anything else seen in Australia provided a unique point of difference in the market whilst also saving on the requirement to install new internal ceilings and wall linings.
4. The creation of a unique roof top parkland to create a valuable amenity for the building and its residents.
5. The construction of the project was completed on time and on budget.
6. The project has proven to be a sales success with only a handful of the apartments remaining.



### Award Winning House

Senior Associate Steven Isaacs and his wife, Architect Lisa Saville, have recently won several awards for the design of their own home in Hunters Hill. Creating a peaceful and healthy environment nestled in an untouched natural setting was the priority for Steven and Lisa. The home has won several awards.

→ [click here for more info](#)



### Welcome Carl

Carl Coyle has recently joined Marchese Partners as the team leader for the interiors division following over 15 years experience in architecture and interior design.

→ [click here for more info](#)

### M+P Opens Brisbane Office

Responding to the buoyant residential market in Queensland, Marchese Partners has recently formed an affiliate office in Brisbane to service our projects in Queensland. Although the Marchese + Partners head office is located in Sydney, Marchese Partners have proven to be highly competent at delivering services on the ground in various local and international locations. Marchese Partners has Offices in Sydney and San Diego and Affiliate offices in Melbourne and now also in Brisbane.

Presently, Marchese + Partners are working on a number of projects in Queensland, including a large residential development of 350 apartments on the sunshine coast, the refurbishment of the Mecure Hotel in Townsville as well as the design of a Tavern and Bottle Shop in Noosa.

**STOP PRESS!**

**DEE WHY HOTEL REDEVELOPMENT APPROVED. CLICK HERE FOR MORE INFO.**

OUR VISION TO BECOME THE WORLDS BEST MULTI-UNIT RESIDENTIAL ARCHITECTS + INTERIOR DESIGNERS PROVIDING SERVICES TO LEADING DEVELOPERS ANYWHERE IN THE WORLD.

MAY 06  
**ISSUE 19**



## MARCHESE + PARTNERS NEWS

### - Saville Isaacs House

→ return to home

#### Award Winning House

As designers, clients and parents it was important for Steven and Lisa to respond responsibly to the impact of construction on such a natural untouched setting. The overall layout and design of the house is practical and compact, yet flexible. Clean, white internal planes form a backdrop to nature, inviting the outside in and in turn creating a symbiosis of nature and habitation.

This projects demonstrates that it is possible to achieve beautiful design using ESD principles and sustainable, recycled, low-toxic and cost-effective materials. Careful consideration was given to the choice of materials to ensure minimal impact on the greater environment, local environment (the site), as well as the impact on the inhabitants. This was achieved whilst also completing the construction on a modest budget.

Steven and Lisa's house was published in Houses Magazine April issue and has won the following prestigious awards:

- Best Residential Interior Design NSW
- High Commendation in Environmentally Sustainable Design
- Hunters Hill Council Design Award





## MARCHESE + PARTNERS NEWS

- Welcome Carl

→ [return to home](#)



Carl Coyle has recently joined Marchese partners as senior associate in charge of our Interior design Division. His experience encompasses the design and delivery of high quality commercial fit out projects as well as a number of high end residential projects. He is an accomplished architect, successfully managing many projects from concept stage through to completion.

Carl has several years experience working in London at an associate level, managing teams of up to 15 people. During this time he worked on a number of high profile commercial fit out projects, including his time as a Senior Lead Architect at Morey Smith

where he was responsible for the £3.5m office fit out of EMI/Virgin head office.

Whilst at Pringle Brandon Architects, considered by many in the UK to be one of the specialists in modern office design, Carl worked on a number of diverse and groundbreaking projects including Allen + Overy's Team relocation, incorporating 'New Ways of Working' freeing whole departments from traditional cellular space and relocating them across 3 floors into open plan spaces utilising the latest wireless and paperless technology.

Carl's London experience includes an acute understanding of 'New Ways of Working' which aims to deliver space savings, greater flexibility, productivity and efficiency which has proven to be of great benefit to corporate tenants in today's hi - tech workplace.

As well as commercial experience, Carl also has significant residential interiors experience having taken control of a multi unit residential project at the exclusive address of 21st Mayfair in London. The boutique project consisted of 14 two and three bedroom prestige apartments and 2 highly sought after multi-million pound penthouses.

The project incorporated very high quality finishes and detailing throughout.

Carl brings with him a high level leadership capability and experience as well as some new ways of looking at the 21st century workplace. With his proven track record in handling large scale commercial and residential projects, Carl is proving to be a valuable member of the Marchese + Partners team.

OUR VISION

TO BECOME THE WORLDS BEST MULTI-UNIT RESIDENTIAL ARCHITECTS + INTERIOR DESIGNERS PROVIDING SERVICES TO LEADING DEVELOPERS ANYWHERE IN THE WORLD.

MAY 06  
ISSUE 19



## MARCHESE + PARTNERS NEWS

[- STOP PRESS! Dee Why Hotel Redevelopment Approved](#)

[→ return to home](#)

### Redevelopment Approved!

Warringah Council announced this week the approval of the large redevelopment proposal for the Dee Why Hotel. Council's administrator Dick Persson congratulated the hoteliers for "going back to the drawing board" and appointing Marchese Partners to prepare the revised scheme. A previous proposal was rejected by Council in November 2003.

The project brief required a floor space density of 3.5 : 1 to be achieved including a large supermarket, 1250 square metre hotel, 2370 square metres of retail space, bottle shop, 2488 square metres of commercial space, 235 apartments and 720 car spaces.

Marchese Partners design achieved the required result, which is significant, given the complexities of the brief and development controls.

Marchese Partners design and strategic approach to the development proposal was pivotal in achieving the Development approval in only 14 months.



OUR VISION

TO BECOME THE WORLDS BEST MULTI-UNIT RESIDENTIAL ARCHITECTS + INTERIOR DESIGNERS PROVIDING SERVICES TO LEADING DEVELOPERS ANYWHERE IN THE WORLD.

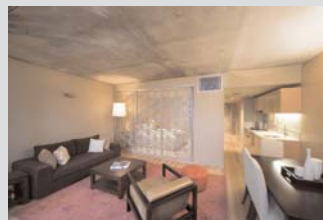
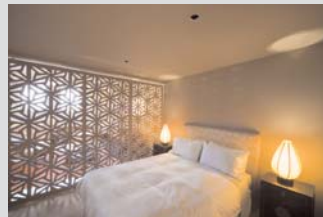
MAY 06  
ISSUE 19



# MARCHESE + PARTNERS NEWS

- M-Central - Gallery by John Gollings

→ [return to home](#)



OUR VISION

TO BECOME THE WORLDS BEST MULTI-UNIT RESIDENTIAL ARCHITECTS + INTERIOR DESIGNERS PROVIDING SERVICES TO LEADING DEVELOPERS ANYWHERE IN THE WORLD.

MAY 06  
ISSUE 19