

# MARCHESE + PARTNERS NEWS



## Eagle House Residential Conversion approved!!!

Marchese Partners design for the conversion of Eagle House to residential apartments has been approved.

The conversion of Eagle House to a residential building provides an excellent opportunity to develop a high quality residential building in the sought after Milsons Point area. 80 luxury apartments are proposed featuring a mix of 1, 2 and 3 bedroom apartments including 4 penthouses. The apartments are designed to benefit from both solar access and natural ventilation. Adjustable louvers on the western façade provide the western units with excellent natural light access as well as providing privacy from the existing approved residential development across Cliff Street. The provision of winter gardens to the development facilitate a greater livability to the apartments and also assist in noise reduction and privacy.

→ [click here for more info](#)



BEFORE



AFTER

- eagle house
- nutricia
- regent st
- lawn bowls

→ visit our websites [www.marchesepartners.com.au](http://www.marchesepartners.com.au)  
[www.addition.com.au](http://www.addition.com.au)



## Nutricia – Corporate Office design with Green Star Rating

The Marchese + Partners Interiors division have been busy saving the world by designing a corporate fit out with a green star rating.

→ [click here for more info](#)



## Regent Street Complete

Marchese Partners Hightown Apartments in Regent Street Chippendale has just been completed.

→ [click here for more info](#)



## Lawn Bowls

The M+P social events calendar kicked off last Friday with an event that incorporated the three B's that are the essential components of a successful event: Beer, Barbecue and Bowling.

→ [click here for more info](#)

## OUR VISION

TO BECOME THE WORLDS BEST MULTI-UNIT RESIDENTIAL ARCHITECTS + INTERIOR DESIGNERS PROVIDING SERVICES TO LEADING DEVELOPERS ANYWHERE IN THE WORLD.

MARCH 06  
ISSUE 18

## MARCHESE + PARTNERS NEWS



- eagle house
- nutricia
- regent st
- lawn bowls

→ [return to home](#)

### Eagle House Residential Conversion approved!!!

The redesigned facades of the building provide a clean crisp modernist aesthetic, with deep balconies adding depth and shade to the façade. The north east corner is articulated with a large recess supporting a glass corner projection with bronzed horizontal louvers. The architectural expression at this corner of the proposal responds to the important intersection of Alfred and Lavender Streets and will provide an appropriate backdrop to the busy roundabout below. The western elevation incorporates a grid of columns and spandrels. Between the grid natural anodized adjustable aerofoil vertical louvers are installed. The proposal pursues modernist approach to this brief and in doing so, converts a prominent unattractive building into a desirable and attractive gateway to the Milsons Point area.

The Development application was lodged in December 2004 and was approved early this year.



#### OUR VISION

TO BECOME THE WORLDS BEST MULTI-UNIT RESIDENTIAL ARCHITECTS + INTERIOR DESIGNERS PROVIDING SERVICES TO LEADING DEVELOPERS ANYWHERE IN THE WORLD.

MARCH 06  
**ISSUE 18**

## MARCHESE + PARTNERS NEWS



- eagle house
- **nutricia**
- regent st
- lawn bowls

→ [return to home](#)

### Nutricia – Corporate Office design with Green Star Rating

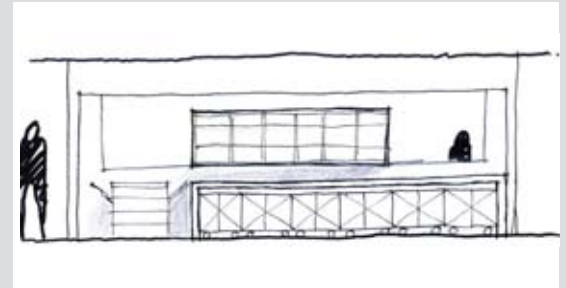
Nutricia is a forward thinking nutritional baby food company. Their office is located in a green star rated building at Talavera Corporate Park. The brief was to design a fit out covering 1300sqm for two separate divisions with shared facilities. They were also asked to incorporate Environmentally Sustainable Design principles in keeping with the Building's green star rating and Nutricia's global environmental principles and vision.

The M+P response to the brief included a layout of two separate divisions with a communal hub of facilities such as hot desking, breakout facilities and utilities/ storage area intersecting into the 2 divisions. This creates an opportunity for employees to interact and is highlighted by bands of brightly coloured linoleum flooring - each colour representative of Nutricia's corporate core values.

In order to comply with the Environmentally Sustainable Design principles, the interiors team we came up with the following innovative solutions:

- Minimal use of fixed joinery. Proprietary cabinets are integrated into the joinery design – thus reducing the need for fixed cabinets and providing the flexibility of reusing the proprietary cabinets in future fitouts.
- Using natural flooring products such as linoleum in lieu of vinyl to high traffic areas – for natural sound absorption.
- Using paints low in Volatile Organic Components to minimise Sick Building Syndrome.
- Locating enclosed spaces towards the centre of the floor plate and open areas to the perimeter windows to maximise the amount of natural light penetrating into the work environment.
- Integration of planting into the work environment to significantly remove the level of VOC's in the office air.

The project is currently under construction with the completion expected in early April.



#### OUR VISION

TO BECOME THE WORLDS BEST MULTI-UNIT RESIDENTIAL ARCHITECTS + INTERIOR DESIGNERS PROVIDING SERVICES TO LEADING DEVELOPERS ANYWHERE IN THE WORLD.

MARCH 06  
**ISSUE 18**

# MARCHESE + PARTNERS NEWS



- eagle house
- nutricia
- **regent st**
- lawn bowls

→ [return to home](#)

## Regent Street Complete

Comprising 54 residential apartments and 3 retail shops, the Hightown Apartments project developed and constructed by Hightrade is a striking infill development located a stone throw from Central Station and Railway Square.

Marchese + Partners design for this building was highly commended by Sydney City Council on its approval in 2002 as it enables the differing scales of the streetscape to be connected and resolved in a harmonious way. The design incorporates a series of simple cube like forms that align with the varying scales of the existing neighbouring buildings, including the Heritage listed bank building at the corner of Regent Street and Parramatta Road.

The podium incorporates 2 storey loft apartments with a dramatic street presence whilst the tower incorporates apartments that benefit from a full height atrium that provides light and ventilation to the core of the building.

This building is now fully occupied. The majority of the apartments being sold off the plan prior to completion.



## OUR VISION

TO BECOME THE WORLDS BEST MULTI-UNIT RESIDENTIAL ARCHITECTS + INTERIOR DESIGNERS PROVIDING SERVICES TO LEADING DEVELOPERS ANYWHERE IN THE WORLD.

MARCH 06  
**ISSUE 18**

## MARCHESE + PARTNERS NEWS



- eagle house
- nutricia
- regent st
- **lawn bowls**

→ [return to home](#)



### Lawn Bowls

Waverton Bowls Club with a backdrop of the harbour provided a beautiful setting for the M+P bowls tournament. In the spirit of the Commonwealth Games, the staff at M+P chose to represent a country and competed in the colours of their adopted national teams. The final turned out to be a Bledisloe rematch with Australia and New Zealand doing battle. Like the Commonwealth Games, Australia came away with all the gold, with the team of Ralph Steller, Peter McMillan, Deborah Barnett and James Horler, proving too good for the plucky kiwis.

### OUR VISION

TO BECOME THE WORLDS BEST MULTI-UNIT RESIDENTIAL ARCHITECTS + INTERIOR DESIGNERS PROVIDING SERVICES TO LEADING DEVELOPERS ANYWHERE IN THE WORLD.

MARCH 06  
ISSUE 18